



Providence Care Hospital

Master Planning Process

Concept Design

June 2011

Providence
Care

HOSPITAL



Welcome & Introductions

Glen Wood - *Board Chair, Providence Care*

Providence Care - *St. Mary's of the Lake Hospital, Mental Health Services, Providence Manor, community locations throughout Southeastern Ontario*

Providence
Care

HOSPITAL



Providence Care - services

Programs:

- Complex continuing Care (St. Mary's)
- Palliative Care (St. Mary's)
- Physical Medicine and Rehabilitation (St. Mary's)
- Specialized Geriatric Services (St. Mary's)
- Specialized Mental Health (Mental Health Services)
- Long-Term Care (Providence Manor)
- Community programs (across Southeastern Ontario)

Founded by the Sisters of Providence of St. Vincent de Paul, 1861

Academic affiliation with Queen's University, partnership with St. Lawrence College and other institutions



Session agenda

1. **Welcome**
2. **Providence Care redevelopment – context**
3. **Presentation of new hospital “design concept”**
4. **Small group discussion**, opportunity to note input and feedback
5. **Hear feedback from table groups**, summarize discussions
6. **Next steps**



Questions & Comments

- Opportunity to discuss input, comments, concerns during the small group discussions
- Following this meeting, Providence Care staff will take back all of the feedback, and consider the questions that are raised tonight, and follow-up by posting updates on our website
 - www.providencecare.ca
 - Sign up for email updates on our redevelopment blog



Purpose of this session

- Providence Care is currently in the “Master Planning” process for the new hospital
- No decisions have been made on the exact design of Providence Care Hospital, or where it will be located on the site
- We are seeking your feedback and comments on our most up-to-date “concept design”



Providence Care - redevelopment

Dale Kenney – *President & CEO, Providence Care*

- **Providence Care redevelopment**
 - Community support: University Hospitals Kingston Foundation Together We Can campaign - \$72 million dollars
 - Part of that money will support the Providence Care Hospital project



Definitions

Master Program:

Long-range planning document, describing the services the hospital will provide, and the volumes of the activities (number of people who use the service), as well as the space (square footage) required for those volumes.

	2020/21	2025/26	2030/31
Service A	Volume ##	Volume ##	Volume ##
Service A	Sq.Footage	Sq.Footage	Sq.Footage



Definitions

Master Plan:

Long-range plan for the site, to accommodate the volumes/spaces set out in the Master Program, in a way that allows for future expansion and site planning.

- Still high-level planning
- Concepts, principles



Definitions

Functional Program:

Detailed planning of the building services and spaces to a particular point in time (shorter-term planning target).

- The Providence Care Hospital Functional Program describes detailed space descriptions to 2020/21.



What we know

- Land: 30 acres
- Occupancy of new hospital: Proposed date – 2016
- # of beds in new hospital: 270 (based on volumes for 2020/21)
- Site zoning: Institutional
- City infrastructure: No major issues
- Services at the new hospital: Same as are currently at St. Mary's of the Lake Hospital and Mental Health Services



Design Concept

Ted Darby – *VP, Planning, Providence Care, Kingston General Hospital and Hotel Dieu Hospital*

Michael A. Moxam - *OAA, MAA, FRAIC, Assoc. AIA, LEED® AP Senior Principal Stantec Architecture Ltd.*



Vision for Providence Care Hospital

We are building a new Providence Care Hospital to provide a state-of-the-art care environment for our patients and clients, and work environment for our physicians, staff and volunteers.

Providence
Care

HOSPITAL



Planning Principles

Providence Care – Strategic Directions:

1. Enhancing Quality of Life
2. Living Our Values
3. Fostering a Learning Environment
4. Strengthening Our Relationships
5. Enhancing Health Systems Efficiency and Effectiveness

Planning Principles:

- The care environment
- Integration of education and research
- Long-term flexibility & using resources to best effect
- Patient/client independence
- Supportive of employees
- Environmentally responsible



The Care Environment

- Engage the landscape and nature
- Natural light throughout
- Clear wayfinding
- Provides places of respite
- Accessibility





Integration of Education and Research

- Create strong community connections
- Build on synergies with St. Lawrence College and Queen's University
- Multipurpose teaching space for community use
- Clinical education space on each floor
- Create a “health campus”





Long-Term Flexibility & Use of Resources to Best Effect

- Effective, efficient planning
- Retail uses at entrance lobby
- Ensure infrastructure facilitates flexibility, adaptability and future expansion
- Cost-effective design and construction methodology





Patient/Client Independence

- Support patient, client independence
- Access to light and views
- Strong connections to activity at the Lake, landscape and City





Supportive of Employees

- Efficient planning and adjacencies
- Enhance quality of movement between destinations
- Natural light and views
- Spaces of respite
- Ergonomics and quality of workspace





Environmentally Responsible

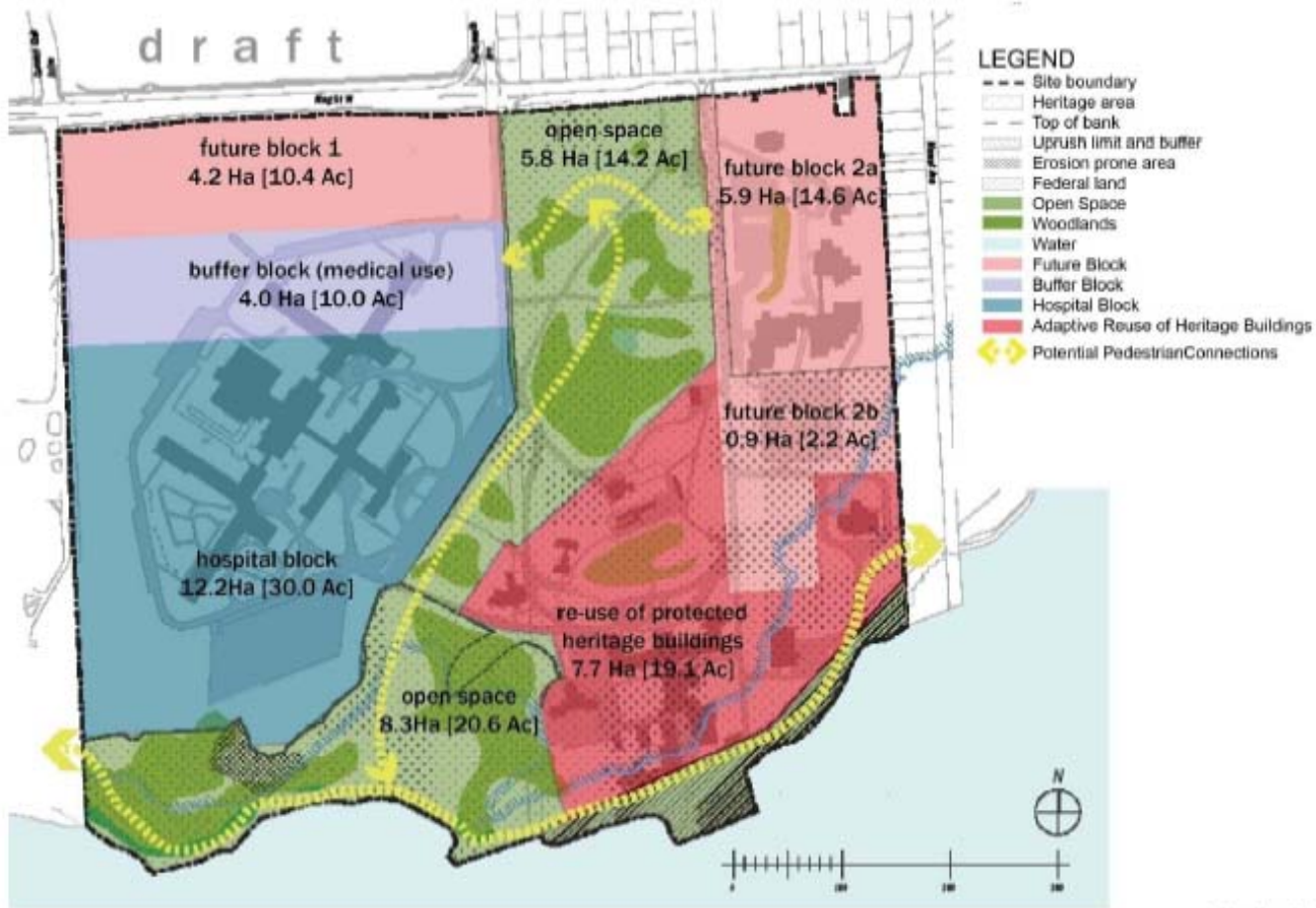
- Commitment to sustainability
- An environmentally responsible facility
- A “community asset”



Providence
Care

HOSPITAL

OILC – Draft plan, Kingston Provincial Campus



pA
planning architects

Poulos & Chung | Dougan & Associates | XCG Engineering | BRAY Heritage | Altus Group | urbanMetrics

Master Plan
24 February, 2011

KINGSTON PROVINCIAL CAMPUS
Ontario Realty Corporation

Providence
Care

HOSPITAL



PCH site - Opportunities

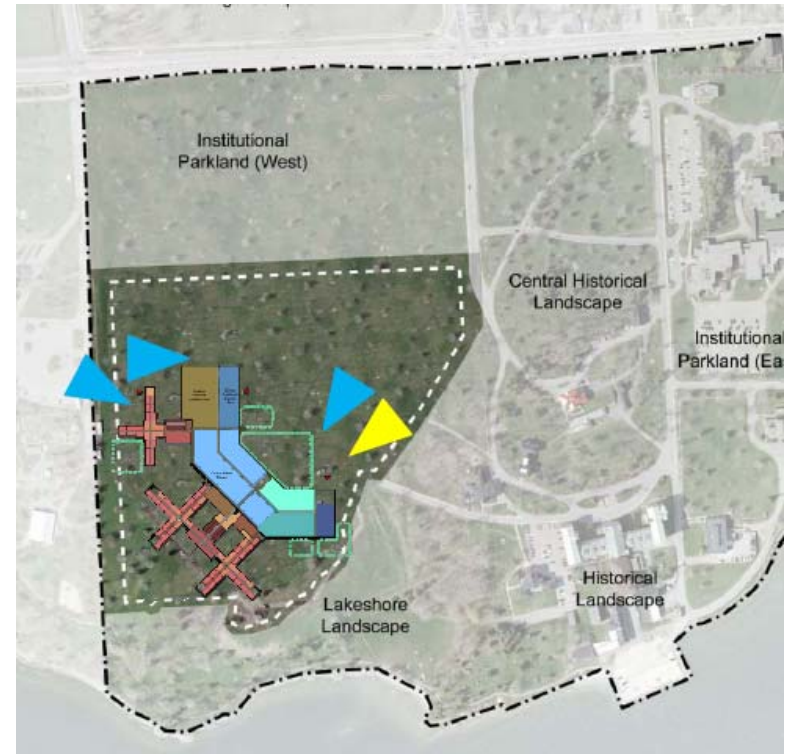


- Views to waterfront
- Views to nature



Planning process - considerations

- Orientation on site
- Location on site
- Number of floors
- Cost – capital cost and operating budget
- Future expansion
- Traffic flow, existing roads
- Environmental impact of new building
- Planning principles





Proposed planning concept





Proposed planning concept



Providence
Care

HOSPITAL



Proposed planning concept



Providence
Care

HOSPITAL



Proposed planning concept

- **Building orientation/location:** Patient care areas view to Lake and nature; new building on south of site
- **Number of floors:** Four – efficient travel time between areas of the hospital; compact design – environmentally responsible to build and operate; low-rise near waterfront
- **Cost:** Proposed design concepts within budgets
- **Future expansion:** Room on site to expand outwards
- **Existing MHS building:** Allows for construction with minimal disruption to current patient/client care at MHS



Small Group Discussion

What do you really like about the proposed concept design?

What other considerations do you suggest we keep in mind in planning for the new hospital?



Next Steps

- Ongoing planning process
- Construction in approximately 18-24 months
- Updates on www.providencecare.ca – Redevelopment blog
- Public meetings, news releases, publications by the hospital to continue sharing information
- Contact: info@providencecare.ca or Jenn Goodwin, Director of Communications, 613-548-5567 ext. 5668